

DAY MAKEUP

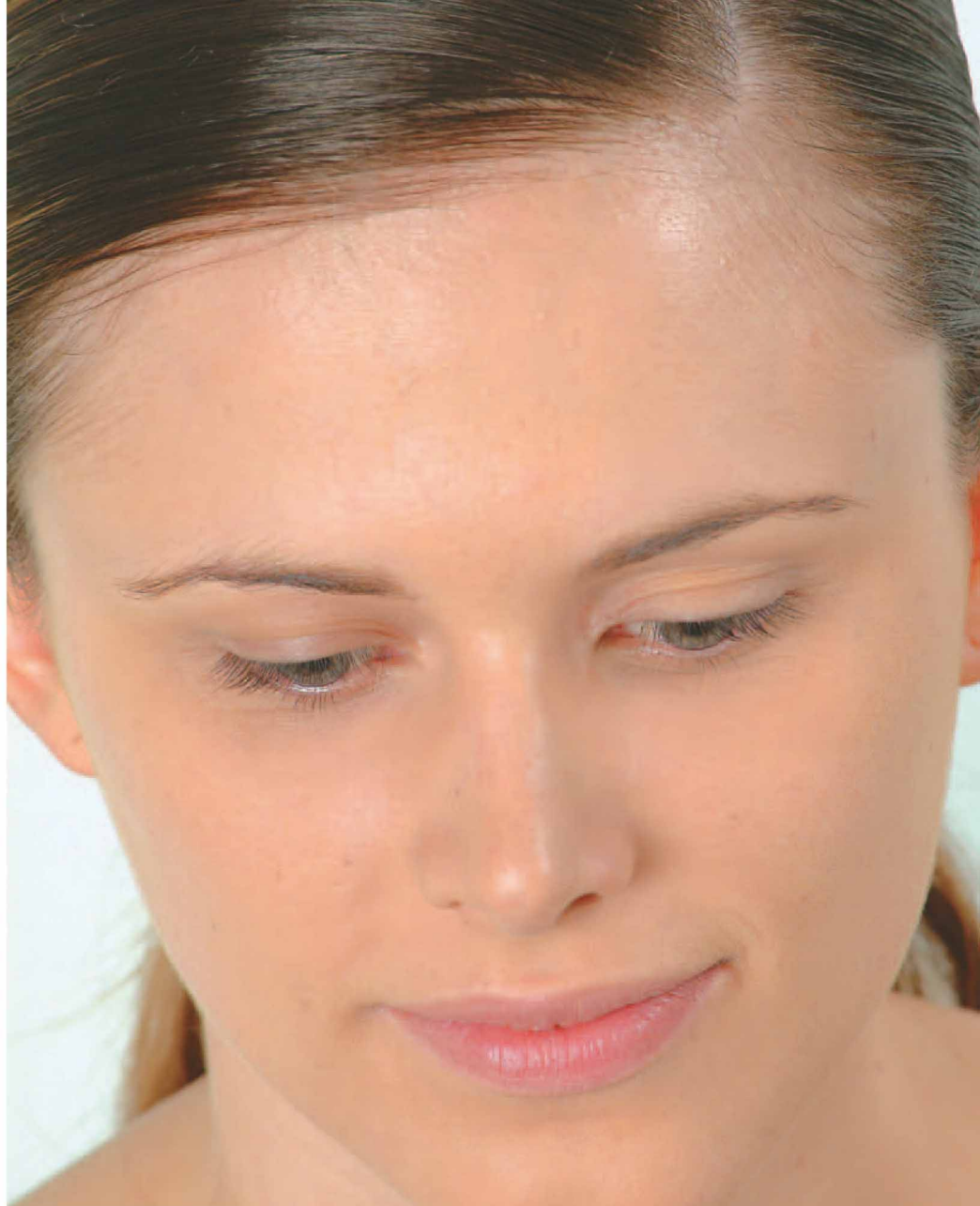
BEFORE

STEP 1: Put small amount of Capsule Essence Base "Blue" on dark circles under eyes, blend and allow to dry.

STEP 2: Dab small amount of Capsule Essence Base "Violet" on blemishes and allow to dry.

STEP 3: Apply Fisso Foundation No 23 Beige with sponge. Blend through to ears, hairline and down the neck.

STEP 4: Apply BI Colour Sensor 2-Way, No 23 Beige, over Fisso foundation with a brush or "dry" powder puff applicator.



CREATE THE LOOK

With Catalina Geo

Roslyn Camuglia, makeup artist to the stars on the sets of shows such as CATS and Phantom of the Opera shows how to create two stunning looks, using the premium quality **Catalina Geo** range of professional makeup. The makeover progresses from a day to an evening look, illustrating the flexibility of the range and highlights how simple it is for clients to recreate these looks at home.



STEP 5

For a soft natural, day look use Eyeshadow Compact No. 1 – Brown Collection.

- Begin with lightest colour all over the eyelid.
- Go to mid brown on the socket line.
- Use darkest shade to contour on outer edge to extend the eye shape out.
- Apply darkest shade dry on lash line and under the eye.



STEP 6

Apply Long and Deep Mascara in black to top and bottom lashes.

TIP: APPLY TO BOTTOM LASHES FIRST AND RESIST TOP LASH MASCARA HITTING THE LID BEFORE DRY.



STEP 7

Applying Eye Brow makeup No. 1 using angle brush.

STEP 8

Apply Face Touch Compact No 8 as blush in medium browns as follows:

- Lighter shade on the cheek bone.
- Darker shade to contour under cheek bone and on temples, with a soft sweep just under the chin.



Applying blush





Natural Day Look



Applying Lipset
No. 46 in
Rose Drop



STEP 9

LIPS

- a) Apply lip pencil No 40 to define the lips. Apply lightly and blend out gently, using a cotton bud or finger, to soften the outline for a natural day look.
- b) Apply Lipset No 46 in Rose Drop, using lip brush.
- c) Finish off the edges with lip pencil No. 40.

