



Every day, every face, every occasion

Clients come from all walks of life in all shapes, sizes and colours, so we can't expect one makeup look to suit everyone. The *Catalina Geo range of professional makeup* crosses all ages and complexions, beautifully demonstrated by two different makeovers; firstly, a formal look for a young brunette with darker complexion and a day and evening look for a more mature client.



Formal youthful look

Step 1: Gently blend a light layer of Fisso Foundation No 11, Pink Beige, to conceal problem areas such as under eyes.

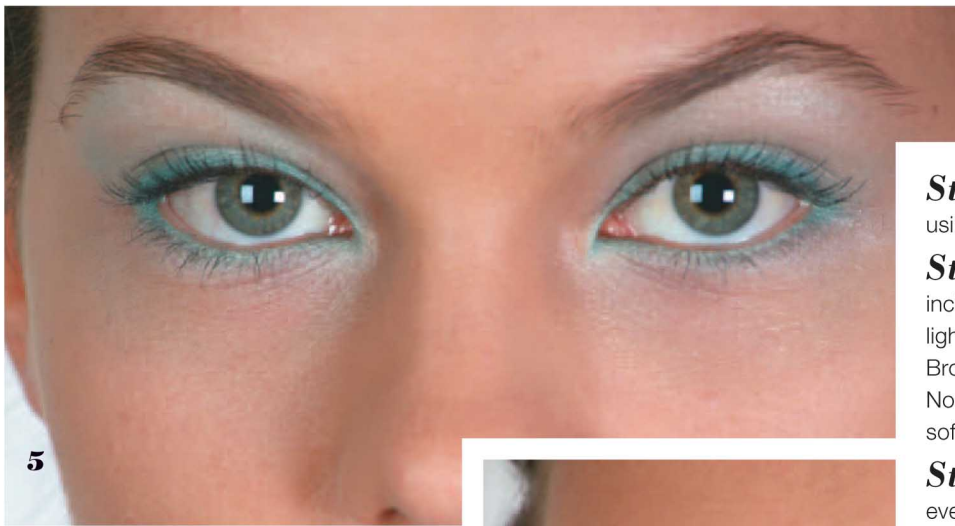
Step 2: Sponge Skin Cover No 26, Vanilla Beige, across the contours of the face, allow to dry and reapply for lasting evening coverage.

Step 3: Finish with a dusting of Face Up Powder No 25, Dark Beige, applied with powder brush.

Step 4: Apply a light, dry hue of eyeshadow pallet No 16, Melon Green, on upper lids and gently blend toward brow arches.

formal, youthful look





5

Step 5: Enhance existing dry colour by applying a darker, wet shade of Melon Green around the corners of the upper lids.

Step 6: Using a small brush, line the upper and lower lids with a thin border of wet eye shadow and blend into a subtle hue.

Step 7: Define lashes using Catalina Geo Long and Deep Mascara in Black.

Step 8: Neaten and finish eyebrows using Brow Make Up Compact No 2 (dark).

Step 9: Accentuate facial contours including jaw line and cheekbones with a light shading of Face Touch Pallet No 1, Browns, and finish with Face Touch Pallet No 7, Medium Pinks, on cheeks for some soft, natural colour.

Step 10: Finish this fun, youthful evening look using Lip Pencil No 20 followed by an application of Lipset No 18, Juicy Pink, and lipgloss.



7



10



9